

NEWS

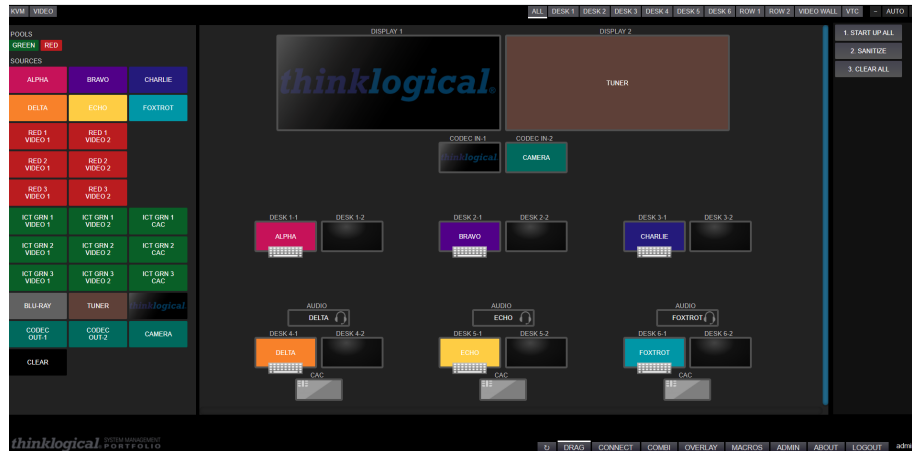
thinklogical

A BELDEN BRAND



NEW! SMP3 CONTROL MANAGEMENT SYSTEM

POWERFUL SOLUTION FOR CONFIGURATION AND OPERATION: Deploy - Monitor - Manage - Optimize



Thinklogical is excited to announce the launch of its new SMP3 (System Management Portfolio) control management solution at InfoComm 2021 in Orlando.

SMP3 is a comprehensive package of integrated hardware and software that provides powerful audio-visual (AV) system configuration, remote management, and maintenance capabilities, making it easier for users to set up, operate and update Thinklogical installations of any size.

New features and enhancements in SMP3 include a graphical On-Screen Display (OSD) that provides a visual representation of a user's desk, an interactive Drag and Drop screen that mimics a room's configuration, resource pooling for shared access to sources, and flexible, user-definable Hot Keys for quick access to key system features. Other SMP3 capabilities include remote system monitoring and updating for simplified system maintenance, and mouse and keyboard sharing for improved user collaboration.

The intuitive graphical user interface available in SMP3 enables quick set-up and control of each source, destination, and matrix switch in the system. Tabs along the bottom and top of the screen allow users to navigate effortlessly through the features and capabilities of the system with just a click of the mouse. In SMP3, changes to the room configuration, sources and destinations can be made quickly and easily by an administrator or authorized user with no specialized programming skills required.

SMP3 improves overall system performance and value by reducing support effort, lowering total cost of ownership, enhancing productivity, and maximizing system uptime. SMP3 is available now from Thinklogical and authorized resellers. [LEARN MORE](#)



**Mitch
Hillsberg**
Director,
Engineering

NEW! THINKLOGICAL TOUCH PANELS FOR SMP

7" AND 10" MODELS AVAILABLE : PoE, Projective Capacitive



Thinklogical's new Touch Panels TPL-7 (7") and TPL-10 (10") support seamless integration with Thinklogical's System Management Portfolio (SMP) solution to facilitate control of Thinklogical Matrix Switches.

The Touch Panels function as simple web-based clients that display a customizable graphical interface that is provided by an SMP webserver. The Touch Panel solution operates on a closed, isolated network in kiosk mode to limit access to only the SMP webserver. The system administrator can configure the SMP so that each Touch Panel's graphical interface has a unique set of sources and destinations, macros, and other system controls.

The Touch Panel is a Linux based computer with a widescreen color PCAP LCD display, with Gigabit Ethernet control, featuring a secured version of a Mozilla Firefox web browser operating exclusively in kiosk mode.

Touch Panels are available now from Thinklogical and authorized resellers. [LEARN MORE](#)



Larry Wachter
VP Engineering

2021 CONFERENCES, TRADE SHOWS AND EVENTS

MEET WITH AN EXPERT, EXPERIENCE A DEMONSTRATION : Join Us In Person



Start Date	End Date	Event Name	Location
10/27/2021	10/29/2021	InfoComm	Orlando, FL
11/3/2021	11/5/2021	AFCEA Belvoir Industry Days	Nat. Harbor, MD



12/16/21, 8:39 AM

thinknews September-October 2021: New! SMP3 Control Management System; Touch Panels

11/15/2021	11/18/2021	AFCEA Alamo ACE	San Antonio, TX	Robert Ventresca VP Marketing
11/18/2021	11/18/2021	NIDV NEDS Symposium	Rotterdam, NL	
12/5/2021	12/8/2021	DODIIS	Phoenix, AZ	
12/7/2021	12/9/2021	CDCA Defense Summit	Charleston, SC	

Have a project? Need help? [Contact](#) one of our experts.

Thinklogical, A Belden Brand 100 Washington Street Milford, CT 06460 USA

You received this email because you are subscribed to Marketing from Thinklogical, A Belden Brand.

Update your [email preferences](#) to choose the types of emails you receive.

[Unsubscribe from all future emails](#)