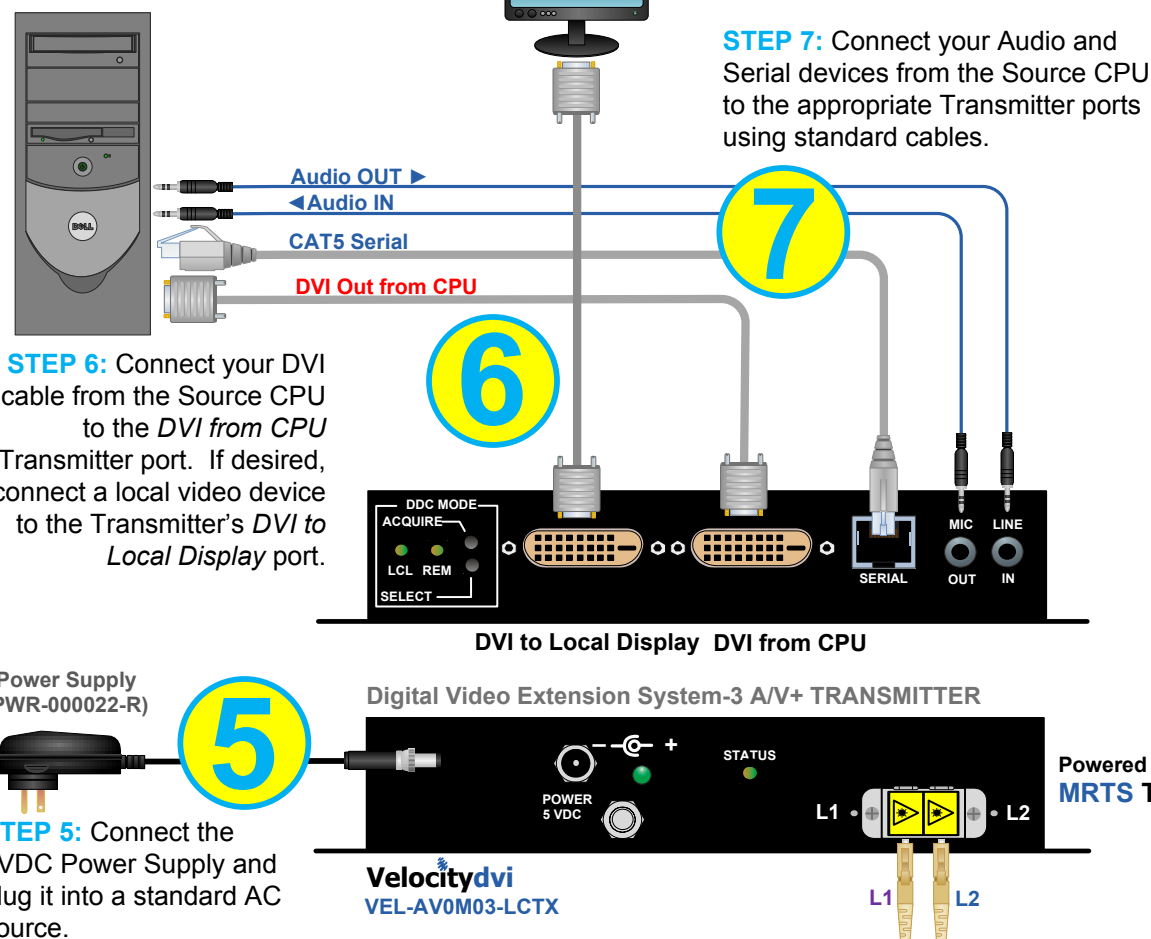


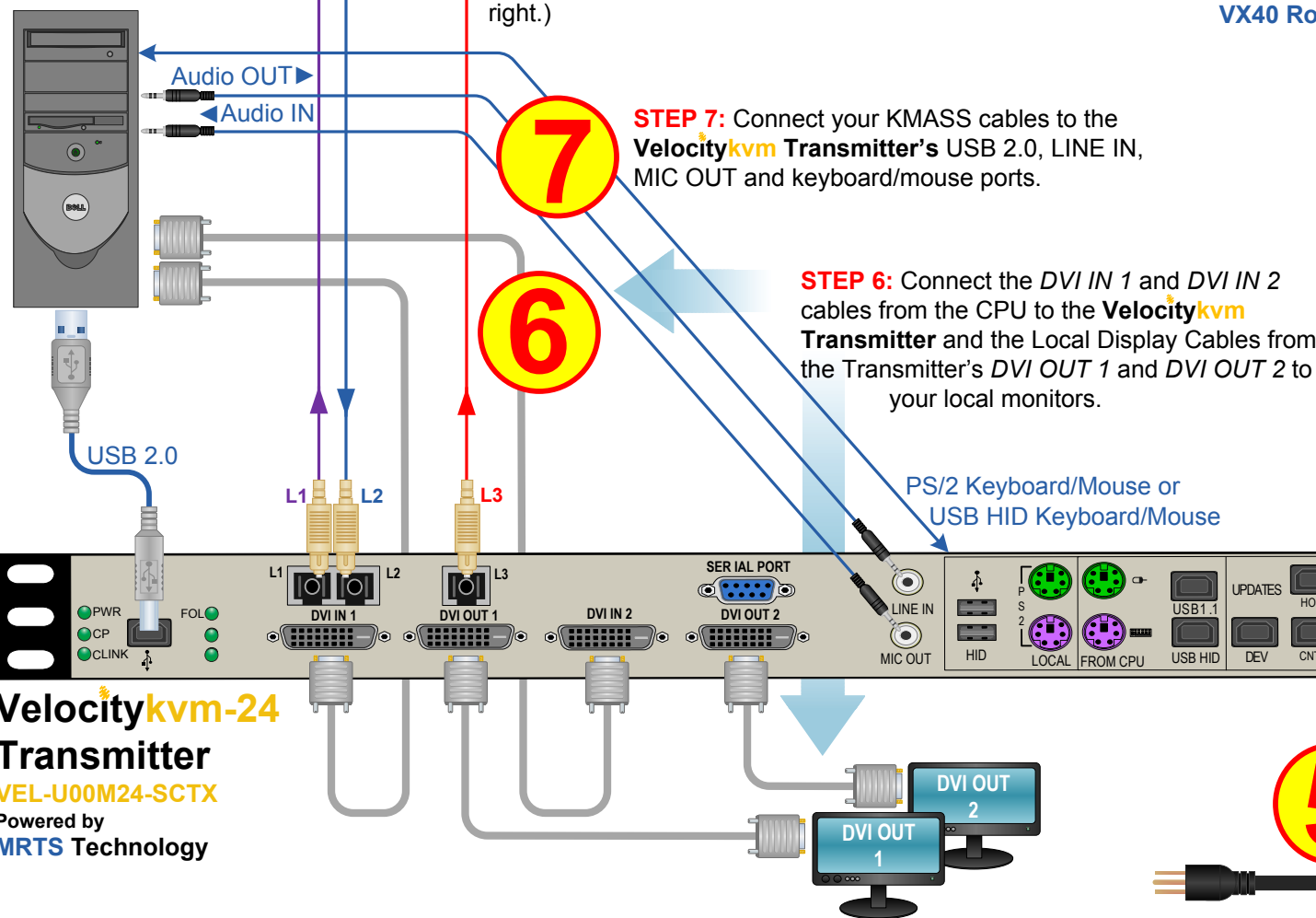
# QUICK-START GUIDE

As used with **Thinklogical's™ Velocitydvi-3 A/V+ and the Velocitykvm-24 Video Extension Systems**

## Single-Link DVI Source

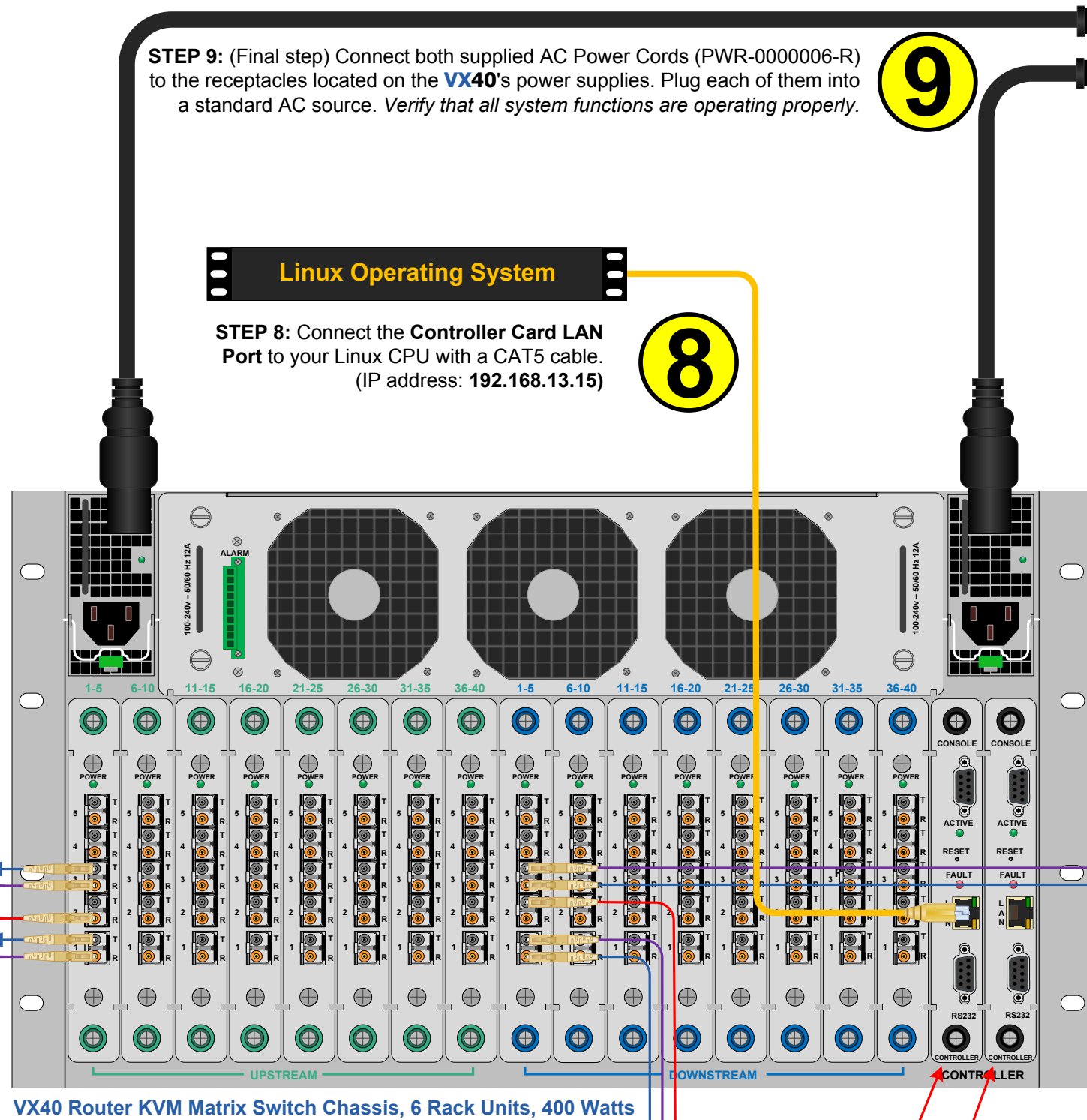


## Dual Head, Single-Link DVI Source

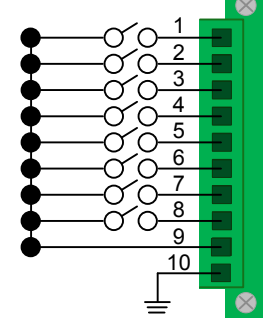


# router VX40 KVM Matrix Switch

Powered by **MRTS Technology**



The **VX40 Router Critical Hardware Alarms:** (Located at the top, left rear of the unit.)

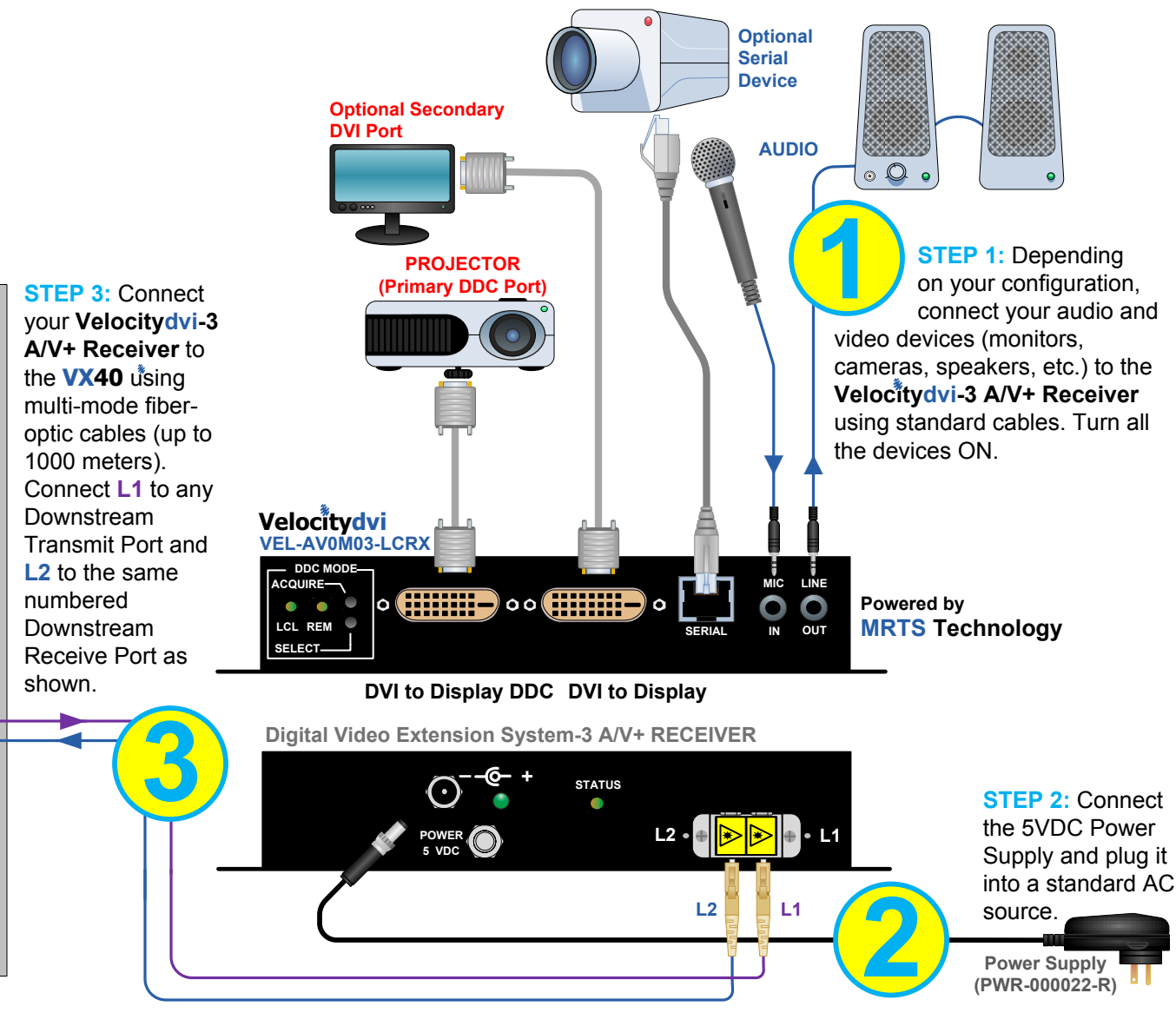


**POWER SUPPLY 1 (LEFT):** Fan failure, temperature spikes, DC voltage and/or current out of range, AC power input interruption and module removed  
**POWER SUPPLY 2 (RIGHT):** Fan failure, temperature spikes, DC voltage and/or current out of range, AC power input interruption and module removed  
**FANS:** Individual fan monitoring  
**TEMPERATURE WARNING:** Chassis over temperature, multiple sensors  
**TEMPERATURE SHUTDOWN:** Chassis over temperature causing shutdown  
**CPU:** Card failure (Only with a redundant card)  
**INPUT/OUTPUT CARDS:** SFP+ failure, laser output fault  
**ANY OF THE ABOVE**  
**COMMON**  
**GROUND**

Thinklogical's™ **VX40 KVM Matrix Switch** features redundant Power Supplies and Controller Modules for uninterrupted performance, even during system reconfiguration, updates or debug. The **VX40** remains fully functional with only one Power Supply installed or with one Controller activated.

**NOTE:** When using a single Controller, the slot on the left must be used.\*

## Single-Link Video & Audio Destinations



## Dual-Head, Single-Link Video & Audio Destinations

