

Velocitydvi

Digital Video Extension System - 3

QUICK START GUIDE

The **Velocitydvi** Digital Video Extension System-3 from Thinklogical™ permits the placement of a digital monitor or projector up to 1000 meters (3280 feet) away from a controlling computer without loss of resolution. Each system consists of a transmitter and a receiver connected by multi-mode fiber optic cable(s). Dual fiber is used for some DDC modes to provide communications to and from the transmitter. The receiver unit provides an interface to the monitor. Installation is plug-and-play and no adjustments are necessary.

Each of the Thinklogical™ DVI Extender systems are designed for high resolution video extension applications such as remote projection centers, theaters and assembly halls, and for secure computer installations. It is now possible to position the monitor or projector in any setting from office to lecture hall to boardroom while keeping the computer secure in a remote, controlled location.

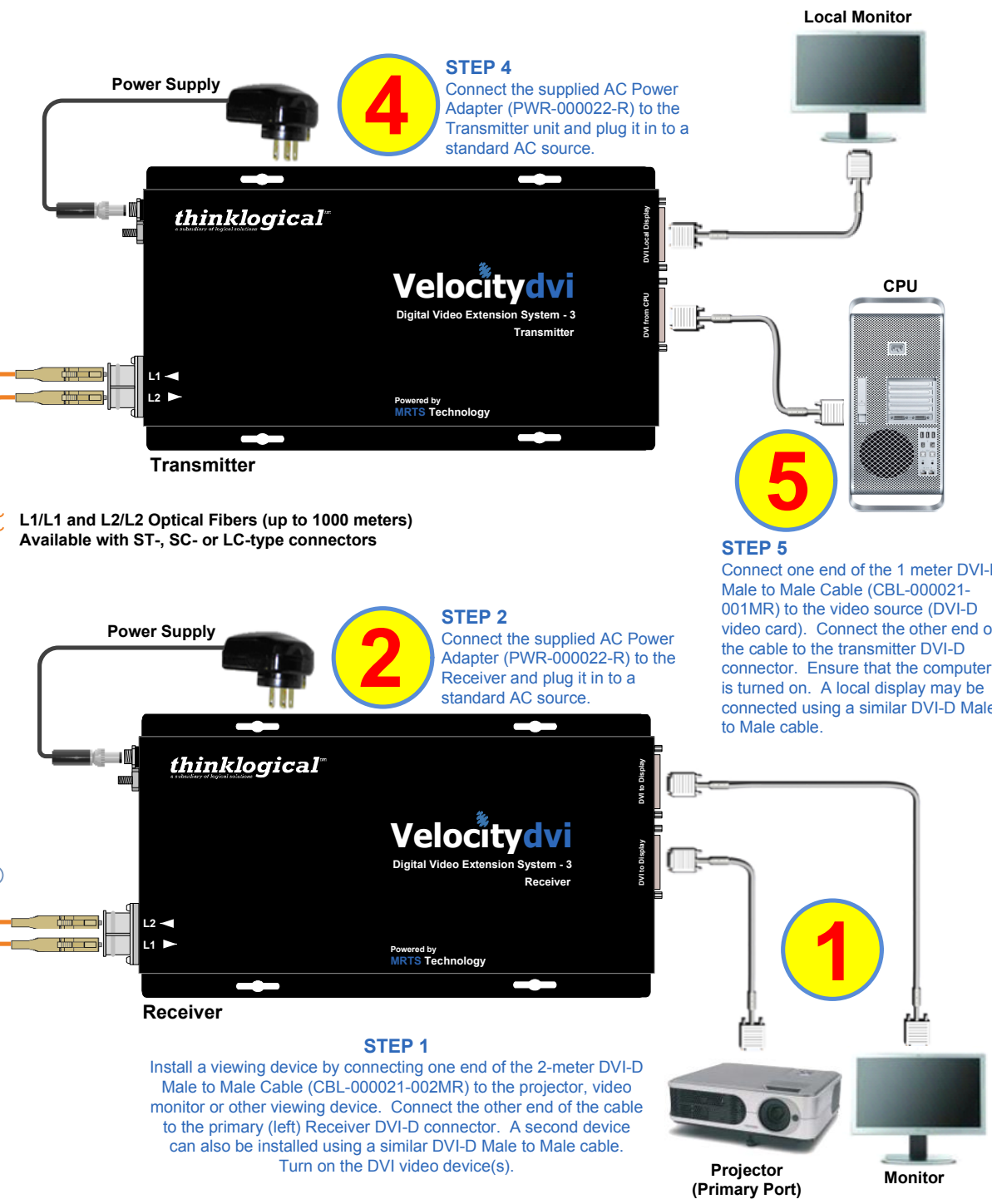
All physical connections to the product use industry-standard connectors.

- Contents**
Upon receiving your Thinklogical™ Velocitydvi Extender, you should find the following items:
- DVI Extender Transmitter
 - DVI Extender Receiver
 - DVI-D Male to DVI-D Male Cable, 1 Meter (CBL000021-001MR)
 - DVI-D Male to DVI-D Male Cable, 2 Meter (CBL000021-002MR)
 - Two Universal AC Power Adapters
 - DVI Extender Product Manual

STEP 3
Connect the fiber optic cable between the Transmitter and Receiver Units. Do not kink or pinch the cable and be sure to keep all bend radii to less than 3 inches.

Single Fiber Operation
The system will operate with a single fiber from the Transmitter (Tx) to the Receiver (Rx). In this mode the Tx can transmit video and status LED information to the Rx via Fiber L1. The Rx cannot send information to the Tx and the Rx buttons are inoperative. Also, DDC information can only be gathered from the Tx local port or the Thinklogical™ default EDID table (see DVI Extender Manual, page 12).

Dual Fiber Operation
In this mode, in addition to the information transmitted through L1, information is transmitted from the Rx to the Tx through Fiber L2. Providing a back channel allows the Rx to modify the DDC configuration via the DDC Mode buttons and send it to the Tx. DDC information exchange allows the PC to gather information about the attached monitor to determine its display properties.



When lit, the solid green LED indicates that power is applied.

The USB port is for firmware upgrades available from Thinklogical™.

Fiber-optic cable ports.

GND

The status LEDs near the USB port on the Tx and Rx units are used to indicate the status of connections to the extender.

- Tx Status LED**
- Green = Fiber L2 is connected and a good link is established.
 - Yellow = Local Static Mode selected and no fiber link from Rx to Tx (L2 is not connected) or both DDC mode buttons are held down and the unit is waiting to reload the default DDC table.
 - Red Flashing = No Fiber Link from Rx to Tx (Not available in Local Static mode.)
- Rx Status LED**
- Green = Good Link and DVI device connected to primary port (port on left in the diagram below).
 - Yellow = No DVI device connected to primary port.
 - RED Flashing = No Fiber Link from Tx to Rx (L1 is not connected).

- Acquire Button**
- Used to initiate DDC collection. Works with all modes except Pass-Thru.
- Select Button**
- Used to select the DDC mode. The modes will cycle through Remote Dynamic, Remote Static, Pass-Thru and Local Static.
- Both Buttons held 5 seconds**
- Holding both buttons for 5 seconds will reload the default DDC table into the Tx and switch to Remote Static mode.

LCL	REM	DDC MODE	DESCRIPTION
○	●	REMOTE DYNAMIC	EDID READS FROM REMOTE DISPLAY AND UPDATES EACH TIME REMOTE DISPLAY CHANGES.
●	●	REMOTE STATIC	EDID READS FROM REMOTE DISPLAY WHEN ACQUIRE BUTTON IS PRESSED.
●	●	PASS-THRU	ACTS AS A DIRECT CONNECTION BETWEEN CPU AND DISPLAY. NO EMULATION IS PERFORMED.
●	○	LOCAL STATIC	EDID READS FROM LOCAL DISPLAY WHEN ACQUIRE BUTTON IS PRESSED.

Copyright © 2009. All rights reserved. Printed in the U.S.A. All trademarks and service marks are the property of their respective owners.



PHONE: (800) 291-3211
WEBSITE: www.thinklogical.com
EMAIL: support@thinklogical.com

Visit us online at www.thinklogical.com for more product information, current updates and the complete line of Thinklogical™ products.